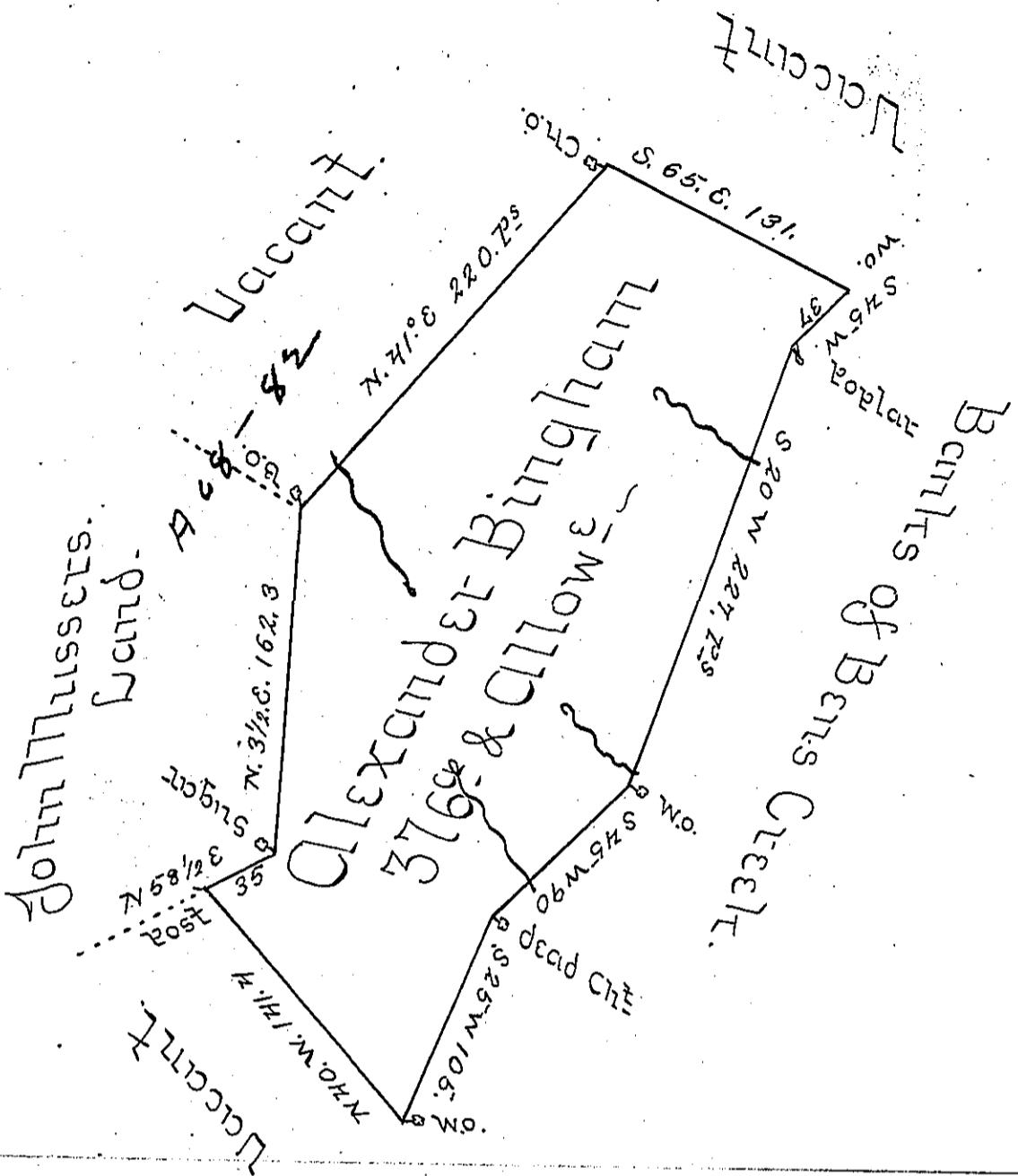


Situate in Salem Township Mercer County



Situate on the Waters of Benas Creek about two Miles  
 above the Forks in Quenahoning Township Bedford  
 County and Surveyed the 16<sup>th</sup> day of May 1786 in  
 Pursuance of a Warrant the 12<sup>th</sup> Day of March 1785.

George Woods U.S.

To John Suters Esq. S.G.

IN TESTIMONY that the above is a copy of the original remaining on file in  
 the Department of Internal Affairs of Pennsylvania, made  
 conformably to an Act of Assembly approved the 16th day of  
 February, 1833, I have hereunto set my Hand and caused  
 the Seal of said Department to be affixed at Harrisburg,  
 this first day of March 1907.

*James P. Brown*  
 Secretary of Internal Affairs.